

# FIRESSQ<sup>®</sup>



**SAFETY IS OUR PRIORITY**

# Profile

Dear Customer,

We are proud to present our new product catalogue for full range of Fire Extinguisher and we are the single shop source for Extinguisher, Charges and Equipments.

We are the company where the quality and services are at par, because '**QUALITY IS OUR MOTTO & SAFETY IS OUR PRIORITY**'. Our supplied Extinguisher and Equipments are recognised by BIS and DGQA (Ministry of Defence). We are largest and one of the main supplier of Fire Extinguisher and Charges to Ministry of Defence i.e. Army and Air Force.

The journey of 18years with a strong backup & healthy support of our skilled & loyal employees, who are the part of HITESH INDUSTRIES Family, which established in 6,285Sq.Mtr. with built up area 20,000Sq. Ft. and equipped with latest and modernised technology.

We thank you very much for the full support and trust in our supply range of product. We sincerely believe to supply the quality product with your kind and valuable co-operation and our nonstop efforts. We assure you to provide best service upto your entire satisfaction.

With Best Regards,  
Sincerely Your's,

  
Hitesh Shah  
CEO

APPROVED BY :



सुगता से विप्रवान  
DGQA



AN ISO 9001-2008  
COMPANY

# ALUMINIUM & STAINLESS STEEL BRANCH PIPE

Trade Mark	FIRESSQ <sup>®</sup>
BIS Specification	As per IS 903
Body	Aluminium As per IS 617/ As per SS 304 (IS 3444 Gr.-1)
Rubber Washer	As per IS 937 (Type - B)
Hydraulic Test	21 Kgf/cm <sup>2</sup> For 2.5 Min.
Working Pressure	12 Kgf/cm <sup>2</sup>
Weight	Aluminium - 0.850 Kgs & SS - 2.0 Kgs Apprx.
Size	63 mm



63 MM ALUMINIUM  
BRANCH PIPE



63 MM STAINLESS  
STEEL BRANCH PIPE

# ALUMINIUM & STAINLESS STEEL COUPLING ASSEMBLY

Trade Mark	FIRESSQ <sup>®</sup>
BIS Specification	As per IS 903
Body	Aluminium as per IS 617 / S.S. As per IS 3444
Rubber Washer	As per IS 937 (Type-B)
Hydraulic Test	21Kgf/cm For 2.5 Minutes
Working Pressure	12 Kgf/cm <sup>2</sup>
Weight	Aluminium <sup>2</sup> - 1.2 Kgs & SS - 3 Kgs
Size	63 mm



ALUMINIUM  
MALE-FEMALE COUPLING



STAINLESS STEEL  
MALE - FEMALE COUPLING

# SINGLE WAY AND DOUBLE WAY HYDRANT VALVE

## TECHNICAL SPECIFICATION FOR SINGLE WAY AND DOUBLE WAY HYDRANT VALVE



**Single Way  
Hydrant Valve**



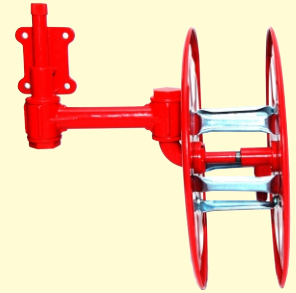
**Double Way  
Hydrant Valve**

Trade Mark	FIRESSQ <sup>®</sup>	FIRESSQ <sup>®</sup>
Perticular	Single Way Hydrant	Double Way Hydrant
Type	Wheel Type	Wheel Type
BIS Specification	As per IS 5290	As per IS 5290
Body, Bonners, Female outlet & Parts	SS 304 (IS 3444 Gr.-1)	SS 304 (IS 3444 Gr.-1)
Spindle	SS 304 (IS 3444 Gr.-1)	SS 304 (IS 3444 Gr.-1)
Rubber Washer	As per IS 937 Type -A	As per IS 937 Type -A
Spring	As per IS 6528	As per IS 6528
Hand Operating Wheel	cast Iron As per IS 210	cast Iron As per IS 210
Gland Packing Asbestos Thread	As per IS 4687 (Type -3)	As per IS 4687 (Type -3)
Hydraulic Test of Body	21 Kg/cm <sup>2</sup> For 2.5 Minutes	21 Kg/cm <sup>2</sup> For 2.5 Minutes
Hydraulic Test of Seat	14 Kg/cm <sup>2</sup> For 2.5 Minutes	14 Kg/cm <sup>2</sup> For 2.5 Minutes
Working Pressure	Up to 10 Kg/cm <sup>2</sup>	Up to 10 Kg/cm <sup>2</sup>
Flow Rate at 7 Kg/cm	900 LMP	1800 LMP
Weight (Approx.)	8.0 Kgs	17.0 Kgs
Body Finish	Painted - Fire/PO Red colour as IS 5 Shade - 536/538	Painted - Fire/PO Red colour as IS 5 Shade - 536/538
Hand Wheel Finish	Painted - Black Paint	Painted - Black Paint
Parts	Polished	Polished
Size	Inlet 75-80mm with 63mm size one number female outlet	Inlet 75-80mm with 63mm size one number female outlet

# HOSE REEL

## Hose Reel

Trade Mark	FIRESSQ <sup>®</sup>
Type	Wall Mounted Fixed / Swinging type
BIS Specification	As per IS 884
Drum	MS as per IS 513
Parts	MS as per IS 513 / Alumium as per IS 738
Water Flow Rate	7 Kgf/cm <sup>2</sup>
Hydraulic Test	21 Kgf/cm <sup>2</sup> For 2.5 Minutes
Discharge at 7 Kgf/cm	24 LMP
Hose Length	6 Mtr Minimum
Intel Size	1" Diameter
Outlet Size	3/4", 1" & 1.5" Diameter Dia.



HOSE REEL

# HOSE BOX

## Hose Box

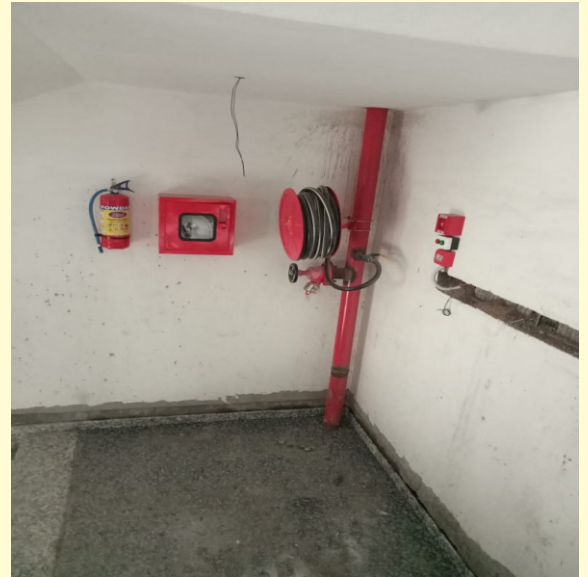
Technical Specifications:		
01	Trade Mark	FIRESSQ <sup>®</sup>
02	Drum	Mild Steel Sheet / FRP Sheet With 14 / 16 / 18 Gauge.
03	Size	1.) 30" x 24" x 10" 2.) 24" x 24" x 10" 3.) 20" x 20" x 10" Are as per Customer Specifiation
04	Features	Single Door & Double Door Easy access in case of fire emergency Keep Fire Hose Safe
05	Application	Office, Complexes, Residential Building, Parking Place and Ware Houses.



HOSE BOX

# HYDRANT SYSTEMS

## Hydrant System



### Technical Specification

01	Trade Mark	FIRESSQ <sup>®</sup>
02	Pipe	MS/Galvanize Pipe as per IS 1239 Class - C with ISI Mark
03	Branch Pipe	SS/Aluminium Body As per IS 903
04	Coupling Assy.	SS/Aluminium Body As per IS 903
05	Hydrant Valve	SS Body as per IS 5290
06	Hose Reel with Drum	As per IS 884
07	Fire Hose Box	Single Door or Double Door
08	RRL	As per IS 636
09	Inlet	As per IS 904

## HYDRANT SYSTEMS

10	Butter Fly Valve	As per IS 13095
11	Working Pressure	10 - 14 Kgf/cm <sup>2</sup>
12	Hydraulic Pressure	21 Kgf/cm <sup>2</sup>
13	Anti-Corrosive Treatment	Dual Coated Primer and One Coat of PO Red / Fire Red as per IS 5 of Shade 536 or 538
14	Mono Block and Diesel Pump with Jockey	Capacity - 3 HP to 1000 HP Make - Luby or Kiloshkar
15	Smoke Detector	With AC or DC Power Operated
16	Sprinkler	Operated Temperature 58 C or 68 C
17	Alarm System	Automatic Fire Indicate Alarm System
18	After Installation and Commissioning	Training for Operating the System to be Provided
		Performance and NOC from Fire Department of System to be Provided by us.
		AMC Provide Quarterly, 6 Monthly or Yearly

## Two Way Inlet & Three Way Inlet Breaching Connection



**Two Way Inlet  
Breaching Connection**



**Three Way Inlet  
Breaching Connection**

01	Trade Mark	FIRESSQ <sup>®</sup>	
Sr. No.	Particular	2 Way Inlet Breaching Connection	3 Way Inlet Breaching Connection
02	Type	2 Way FB Inlet	3 Way FB Inlet
03	BIS Specification	As per IS 1538	As per IS 1538
04	Inlet	2 Nos Male Instruments Adaptor (63 mm with NRV)	3 Nos Male Instruments Adaptor (63 mm with NRV)
05	Outlet	80 mm NB Flaged (IS: 1538 / ANSI B 16.5 150#)	100 mm NB Flaged (IS: 1538 / ANSI B 16.5 150#)
06	Body, Male Adaptor, Drain Valve & Flange	SS 304 (IS 3444 Gr. - 1) & Gunmetal as per IS 318 LTB-2	SS 304 (IS 3444 Gr. - 1) & Gunmetal as per IS 318 LTB-2
07	Inlet Cap and Seat Washer	As per IS 937 Type-A	As per IS 937 Type-A
08	Hydraulic Test of Body	21 Kgf/cm <sup>2</sup> For 2.5 Minutes	21 Kgf/cm <sup>2</sup> For 2.5 Minutes
09	Working Pressure	7 Kgf/cm <sup>2</sup>	7 Kgf/cm <sup>2</sup>
10	Weight (Approx.)	8.5 Kgs	14.0 Kgs
11	Body Finish	Painted - Fire/PO Red Colour as per IS 5 Shade 536/538	Painted - Fire/PO Red Colour as per IS 5 Shade 536/538
12	Male Adaptor	Polished	Polished



Technical Specifications:		
01	Trade Mark	FIRESSQ®
02	BIS Specification	As per IS 636 Type-A
03	Length	15 Mtr & 30 Mtr
04	End Connection	As per Customer Requirement
05	Proof Pressure	21.4 Kgf/cm <sup>2</sup>
05	Bursting Pressure	35.7 Kgf/cm <sup>2</sup>
06	Rein Forced	Rubber Line
07	Mass	450 Gms/Mtr Apprx.
08	Size	63 mm



**RRL**

# ABC CARTRIDGE TYPE FIRE EXTINGUISHER

## ABC CARTRIDGE TYPE

IS : 15683 : 2018



CM/L - 3853775



TYPE 'A' FOR USE  
ON PAPER, WOOD,  
CLOTH, PLASTIC, ETC.



TYPE 'B' FOR USE  
ON PETROL, OIL, PAINTS,  
SPIRIT, CHEMICALS, ETC.



TYPE 'C' FOR USE  
ON COOKING & WELDING  
GAS, ELECTRIC FIRE, ETC.



04 Kg

06 Kg

09 Kg

### Technical Specification

01	Trade Mark	FIRESSQ <sup>®</sup>
02	Approval	BIS Licence No:- CM/L No:- 3853775
03	Type	Portable Cartridge Type (Powder ABC Type)
04	Body	MS / SS (As per IS 513 / IS 6911)
05	Neckring	MS (As per IS 1239 Part-1)
06	Valve	Brass Forged
07	Syphone Tube	ABS/Brass/Aluminium/SS
08	Hose	EPDM/PVC/Rubber
09	Wall Bracket	Wall Bracket with Duly Powder Coated/Zinc Plated with Screw
10	Test Pressure	35 Bar
11	Busting Pressure	55 Bar
12	Anti-Corrosive Treatment	7 Tank Phosphate Treatment & PO Red as per IS 5 (Shade 538) Not Less Than 50 Micron
13	Service Pressure	15 Kg/cm <sup>2</sup>
14	Maximum Service Pressure	18 Kg/cm <sup>2</sup>
15	Filling Tolerance	+ 2%
16	Working Temperature	-30°C to 60°C
17	Extinguishing Medium	Monoammonium Phosphate (MAP) Base Dry Powder (Conform to IS 4308 : 2019)
18	Marking	As per IS 15683 : 2018
19	Maintenance, Care & Refilling	As per IS 2190
20	Packing	Corrugated Boxes.
21	Propellant	Carbon Dioxide Gas (CO <sub>2</sub> )

# ABC CARTRIDGE TYPE FIRE EXTINGUISHER

Sr. No.	Particular	04 Kg	06 Kg	09 Kg
22	Diameter (Approx.)	130 mm	150 mm	175 mm
23	Model No.	HI/CART/ABC/04	HI/CART/ABC/06	HI/CART/ABC/09
24	Gas Cartridge	90 Gms / 120 Gms	120 Gms	200 Gms
25	Min. Effective Discharge Time	15 sec	21 sec	32 sec
26	Minimum Bulk Rang of Discharge	2 Mtr	2 Mtr	2 Mtr
27	Minimum Percentage of Discharge	90 %	90 %	90 %
28	Full Weight (Approx.)	9 Kg	11 Kg	15.5 Kg
29	Hose Length	400 mm	400 mm	500 mm
30	Hydraulic Pressure	Not Less Than 35 Bar		
31	Fire Rating	2A 55B	4A 144B	6A 183B
32	Specification No.	IS 15683 : 2018		

# ABC STORED PRESSURE TYPE FIRE EXTINGUISHER

## ABC STORED PRESSURE TYPE

IS : 15683 : 2018



CM/L - 3853775



TYPE 'A' FOR USE ON PAPER, WOOD, CLOTH, PLASTIC, ETC.



TYPE 'B' FOR USE ON PETROL, OIL, PAINTS, SPIRIT, CHEMICALS, ETC.



TYPE 'C' FOR USE ON COOKING & WELDING GAS, ELECTRIC FIRE, ETC.



### Technical Specification

01	Trade Mark	FIRESSQ®
02	Approval	BIS Licence No:- CM/L No:- 3853775
03	Type	Portable Stored Pressure Type (Powder ABC Type)
04	Body	MS / SS (As per IS 513 / IS 6911)
05	Neckring	MS (As per IS 1239 Part-1)
06	Valve	Brass Forged
07	Syphone Tube	ABS/Brass/Aluminium/SS
08	Hose	EPDM/PVC/Rubber
09	Wall Bracket	Wall Bracket with Duly Powder Coated/Zinc Plated with Screw
10	Test Pressure	35 Bar
11	Busting Pressure	55 Bar
12	Leakage Test	Inverted glass jar / soap Test.
13	Anti-Corrosive Treatment	7 Tank Phosphate Treatment & PO Red as per IS 5 (Shade 538) Not Less Than 50 Micron
14	Service Pressure	15 Kg/cm <sup>2</sup>
15	Maximum Service Pressure	18 Kg/cm <sup>2</sup>
16	Filling Tolerance	± 2%
17	Working Temperature	-30°C to 60°C
18	Extinguishing Medium	Monoammonium Phosphate (MAP) Base Dry Powder (Conform to IS 4308 : 2019)
19	Marking	As per IS 15683 : 2018
20	Maintenance, Care & Refilling	As per IS 2190
21	Packing	Corrugated Boxes.
22	Propellant	Nitrogen Gas (N <sub>2</sub> )

# ABC STORED PRESSURE TYPE FIRE EXTINGUISHER

Sr. No.	Particular	01 Kg	02 Kg	04 Kg	06 Kg	09 Kg
23	Diameter (Approx.)	86.5 mm	108 mm	130 mm	150 mm	175 mm
24	Model No.	HI/SP/ABC/ 01	HI/SP/ABC/ 02	HI/SP/ABC/ 04	HI/SP/ABC/ 06	HI/SP/ABC/ 09
25	Min. Effective Discharge Time	08 sec	10 sec	15 sec	21 sec	32 sec
26	Minimum Bulk Rang of Discharge	1 Mtr	1 Mtr	2 Mtr	2 Mtr	2 Mtr
27	Minimum Percentage of Discharge	90 %	90 %	90 %	90 %	90 %
28	Full Weight (Approx.)	2.2 kg	3.5 kg	6.4 kg	9.2 kg	13.5 kg
29	Hose Length	NA	NA	400 mm	400 mm	500 mm
30	Hydraulic Pressure	NA	NA	Not Less than 36 Bar		
31	Fire Rating	1A 21B	1A 21B	2A 55B	4A 144 B	6A 183B
32	Specification No.	IS 15683 : 2018				

# BC CARTRIDGE TYPE FIRE EXTINGUISHER

## BC CARTRIDGE TYPE



For gasoline Grease & other flammable liquid



For live electrical equipment

IS : 15683 : 2018



CM/L - 3853775



04 Kg

06 Kg

09 Kg

### Technical Specification

01	Trade Mark	FIRESSQ®
02	Approval	BIS Licence No:- CM/L No:- 3853775
03	Type	Portable Cartridge Type (Powder BC Type)
04	Body	MS / SS (As per IS 513 / IS 6911)
05	Neckring	MS (As per IS 1239 Part-1)
06	Valve	Brass Forged
07	Syphone Tube	ABS/Brass/Aluminium/SS
08	Hose	EPDM/PVC/Rubber
09	Wall Bracket	Wall Bracket with Duly Powder Coated/Zinc Plated with Screw
10	Test Pressure	35 Bar
11	Bursting Pressure	55 Bar
12	Anti-Corrosive Treatment	7 Tank Phosphate Treatment & PO Red as per IS 5 (Shade 538) Not Less Than 50 Micron
13	Service Pressure	15 Kg/cm <sup>2</sup>
14	Maximum Service Pressure	18 Kg/cm <sup>2</sup>
15	Filling Tolarence	+ 2%
16	Working Temperature	-30°C to 60°C
17	Extinguishing Medium	Sodium Bi Carbonate (NaHCo <sub>3</sub> ) Base Dry Powder (Conform to IS 4308 : 2019)
18	Marking	As per IS 15683 : 2018
19	Maintenance, Care & Refilling	As per IS 2190
20	Packing	Corrugated Boxes.
21	Propellant	Carbon Dioxide Gas (CO <sub>2</sub> )

# BC CARTRIDGE TYPE FIRE EXTINGUISHER

Sr. No.	Particular	04 Kg	06 Kg	09 Kg
22	Diameter (Approx.)	130 mm	150 mm	175 mm
23	Model No.	HI/CART/BC/04	HI/CART/BC/06	HI/CART/BC/09
24	Gas Cartridge	90 Gms / 120 Gms	120 Gms	200 Gms
25	Min. Effective Discharge Time	15 sec	21 sec	32 sec
26	Minimum Bulk Rang of Discharge	2 Mtr	2 Mtr	2 Mtr
27	Minimum Percentage of Discharge	90 %	90 %	90 %
28	Full Weight (Approx.)	9 Kg	11 Kg	15.5 Kg
29	Hose Length	400 mm	400 mm	500 mm
30	Hydraulic Pressure	Not Less Than 35 Bar		
31	Fire Rating	55B	144 B	183 B
32	Specification No.	IS 15683 : 2018		

# BC STORED PRESSURE TYPE FIRE EXTINGUISHER

## BC STORED PRESSURE TYPE



### Technical Specification

01	Trade Mark	FIRESSQ®
02	Approval	BIS Licence No:- CM/L No:- 3853775
03	Type	Portable Stored Pressure Type (Powder BC Type)
04	Body	MS / SS (As per IS 513 / IS 6911)
05	Neckring	MS (As per IS 1239 Part-1)
06	Valve	Brass Forged
07	Syphone Tube	ABS/Brass/Aluminium/SS
08	Hose	EPDM/PVC/Rubber
09	Wall Bracket	Wall Bracket with Duly Powder Coated/Zinc Plated with Screw
10	Test Pressure	35 Bar
11	Busting Pressure	55 Bar
12	Leakage Test	Inverted glass jar / soap Test.
13	Anti-Corrosive Treatment	7 Tank Phosphate Treatment & PO Red as per IS 5 (Shade 538) Not Less Than 50 Micron
14	Service Pressure	15 Kgf/cm <sup>2</sup>
15	Maximum Service Pressure	18 Kgf/cm <sup>2</sup>
16	Filling Tolarence	± 2%
17	Working Temperature	-30°C to 60°C
18	Extinguishing Medium	Sodium Bi Carbonate (NaHCO <sub>3</sub> ) Base Dry Powder (Conform to IS 4308 : 2019)
19	Marking	As per IS 15683 : 2018
20	Maintenance, Care & Refilling	As per IS 2190
21	Packing	Corrugated Boxes.
22	Propellant	Nitrogen Gas (N <sub>2</sub> )



# BC CARTRIDGE TYPE FIRE EXTINGUISHER

Sr. No.	Particular	01 Kg	02 Kg	04 Kg	06 Kg	09 Kg
23	Diameter (Approx.)	86.5 mm	108 mm	130 mm	150 mm	175 mm
24	Model No.	HI/SP/BC/ 01	HI/SP/BC/ 02	HI/SP/BC/ 04	HI/SP/BC/ 06	HI/SP/BC/ 09
25	Min. Effective Discharge Time	08 sec	10 sec	15 sec	21 sec	32 sec
26	Minimum Bulk Rang of Discharge	1 Mtr	1 Mtr	2 Mtr	2 Mtr	2 Mtr
27	Minimum Percentage of Discharge	90 %	90 %	90 %	90 %	90 %
28	Full Weight (Approx.)	2.2 kg	3.5 kg	6.4 kg	9.2 kg	13.5 kg
29	Hose Length	NA	NA	400 mm	400 mm	500 mm
30	Hydraulic Pressure	NA	NA	Not Less than 35 Bar		
31	Fire Rating	21B	21B	55B	144B	183B
32	Specification No.	IS 15683 : 2018				

# 02, 03 & 4.5 Kg CO<sub>2</sub> CYLINDER

## 02, 03 & 4.5 Kg CO<sub>2</sub> CYLINDER



For gasoline Grease & other flammable liquid



For live electrical equipment

IS : 15683 : 2018



CM/L - 3853775



02 Kg

03 Kg

4.5 Kg

### Technical Specification

01	Trade Mark	FIRESSQ <sup>®</sup>
02	Approval	BIS Licence No:- CM/L No:- 3853775
03	Type	CO <sub>2</sub> Gas Type
04	Body	Seamless Tube (As per IS 7285)
05	Valve	Brass Forged (As per IS 3224 with PESO Certificate)
06	Syphone Tube	ABS/Brass/Aluminium
07	Hose	EPDM/PVC/Rubber (SAE R 100)
08	Wall Bracket	Wall Bracket with Duly Powder Coated/Zinc Plated with Screw
09	Test Pressure	250 Kgf/cm <sup>2</sup>
10	Busting Pressure	650 Kgf/cm <sup>2</sup>
11	Leakage Test	Inverted glass jar / soap Test.
12	Anti-Corrosive Treatment	PO Red as per IS 5 (Shade 538) Fire Red as per IS Not Less Than 50 Micron
13	Working Pressure	125 Kgf/cm <sup>2</sup>
14	Filling Tolerance	+ 5 % & - 0 %
15	Working Temperature	-30 <sup>o</sup> C to 60 <sup>o</sup> C
16	Extinguishing Medium	Carbon Dioxide Gas (CO <sub>2</sub> )
17	Marking	As per IS 15683 : 2018
18	Maintenance, Care & Refilling	As per IS 2190
19	Packing	Corrugated Boxes.

## 02 Kg, 03 Kg & 4.5 Kg Co2 CYLINDER

Sr. No.	Particular	02 Kg	03 Kg	4.5 Kg
20	Diameter (Approx.)	108 mm	140 mm	140 mm
21	Model No.	HI/CO2/02	HI/CO2/03	HI/CO2/4.5
22	Min. Effective Discharge Time	10 sec	13 sec	15 sec
23	Minimum Bulk Rang of Discharge	2 Mtr	2 Mtr	2 Mtr
24	Minimum Percentage of Discharge	95 %	95 %	95 %
25	Full Weight (Approx.)	9 Kg	13 Kg	18 Kg
26	Hose Length	NA	NA	1 Mtr
27	Hydraulic Pressure	180 Kgf/cm <sup>2</sup>		
28	Hose Busting Pressure	Not Less Than 540 Kgf/cm <sup>2</sup>		
29	Fire Rating	21B	34B	55B
30	Specification No.	IS 15683 : 2018		

# FOAM CARTRIDGE TYPE

## FOAM CARTRIDGE TYPE FIRE EXTINGUISHER



IS : 15683 : 2018  
  
 CM/L - 3853775



Technical Specification		
01	Trade Mark	FIRESSQ <sup>®</sup>
02	Approval	BIS Licence No:- CM/L No:- 3853775
03	Type	Portable Cartridge Type (AFFF Foam Type)
04	Body	MS / SS / (As per IS 513 / IS 6911)
05	Valve	Brass Forged
06	Syphone Tube	ABS/Brass/Aluminium/SS
07	Hose	EPDM/PVC/Rubber
08	Wall Bracket	Wall Bracket with Duly Powder Coated/Zinc Plated with Screw
09	Test Pressure	35 Bar
10	Busting Pressure	55 Bar
11	Anti-Corrosive Treatment	7 Tank Phosphate Treatment & PO Red as per IS 5 (Shade 538) Not Less Than 50 Micron
12	Service Pressure	15 Kgf/cm <sup>2</sup>
13	Maximum Service Pressure	18 Kgf/cm <sup>2</sup>
14	Working Temperature	05 °C to 60 °C
15	Filling Tolerance	+ 5 % & - 0 %
16	Extinguishing Medium	AFFF Foam and Portable Water (Conform to IS 4989 : 2018)
17	Marking	As per IS 15683 : 2018
18	Maintenance, Care & Refilling	As per IS 2190
19	Packing	Corrugated Boxes
20	Propellant	Carbon Dioxide Gas (CO <sub>2</sub> )

# FOAM CARTRIDGE TYPE FIRE EXTINGUISHER

Sr. No.	Particular	06 Ltr	09 Ltr
21	Diameter (Approx.)	150 mm	175 mm
22	Model No.	HI/CART/MF/06	HI/CART/MF/09
23	Gas Cart.	60 gms	60 gms
24	Min. Effective Discharge Time	30 sec	42 sec
25	Minimum Bulk Rang of Discharge	2 Mtr	2 Mtr
26	Minimum Percentage of Discharge	95 %	95 %
27	Full Weight (Approx.)	11 Kg	15 Kg
28	Hose Length	400 mm	500 mm
29	Hydraulic Pressure	Not Less Than 35 Bar	
30	Fire Rating	3A 89B	4A 144B
31	Specification No.	IS 15683 : 2018	

# FOAM STORED PRESSURE TYPE FIRE EXTINGUISHER

## FOAM STORED PRESSURE TYPE



For Wood, Paper, Cloth Trash & Other Ordinary Material  
For gasoline Grease & other flammable liquid



06 Ltr

09 Ltr

### Technical Specification

01	Trade Mark	FIRESSQ®
02	Approval	BIS Licence No:- CM/L No:- 3853775
03	Type	Portable Stored Pressure Type (AFFF Foam Type)
04	Body	MS / SS / (As per IS 513 / IS 6911)
05	Neckring	MS (As per IS 1239 Part-1)
06	Valve	Brass Forged
07	Syphone Tube	ABS/Brass/Aluminium/SS
08	Hose	EPDM/PVC/Rubber
09	Wall Bracket	Wall Bracket with Duly Powder Coated/Zinc Plated with Screw
10	Test Pressure	35 Bar
11	Busting Pressure	55 Bar
12	Leakage Test	Inverted glass jar / soap Test.
13	Anti-Corrosive Treatment	7 Tank Phosphate Treatment & PO Red as per IS 5 (Shade 538) Not Less Than 50 Micron
14	Service Pressure	15 Kg/cm <sup>2</sup>
15	Maximum Service Pressure	18 Kg/cm <sup>2</sup>
16	Filling Tolarence	+ 5 % & - 0 %
17	Working Temperature	+05°C to 60°C
18	Extinguishing Medium	AFFF Foam and Portable Water (Conform to IS 4989 : 2018)
19	Marking	As per IS 15683 : 2018
20	Maintenance, Care & Refilling	As per IS 2190
21	Packing	Corrugated Boxes.
22	Propellant	Nitrogen Gas (N <sub>2</sub> )

# FOAM STORED PRESSURE TYPE FIRE EXTINGUISHER

Sr. No.	Particular	06 Ltr	09 Ltr
23	Diameter (Approx.)	150 mm	175 mm
24	Model No.	HI/SP/MF/06	HI/SP/MF/09
25	Min. Effective Discharge Time	30 sec	42 sec
26	Minimum Bulk Rang of Discharge	2 Mtr	2 Mtr
27	Minimum Percentage of Discharge	95 %	95 %
28	Full Weight (Approx.)	9.2 Kg	13.5 Kg
29	Hose Length	400 mm	500 mm
30	Hydraulic Pressure	Not Less Than 35 Bar	
31	Fire Rating	3A 89B	4A 144B
32	Specification No.	IS 15683 : 2018	

# WATER CARTRIDGE TYPE FIRE EXTINGUISHER

## WATER CARTRIDGE TYPE



IS : 15683 : 2018



CM/L - 3853775



For Wood, Paper, Cloth Trash  
& Other Ordinary Material



06 Ltr

09 Ltr

### Technical Specification

01	Trade Mark	FIRESSQ®
02	Approval	BIS Licence No:- CM/L No:- 3853775
03	Type	Portable Cartridge Type (Water Type)
04	Body	MS / SS / (As per IS 513 / IS 6911)
05	Neckring	MS (As per IS 1239 Part-1)
06	Valve	Brass Forged
07	Syphone Tube	ABS/Brass/Aluminium/SS
08	Hose	EPDM/PVC/Rubber
09	Wall Bracket	Wall Bracket with Duly Powder Coated/Zinc Plated with Screw
10	Test Pressure	35 Bar
11	Busting Pressure	55 Bar
12	Leakage Test	Inverted glass jar / soap Test.
13	Anti-Corrosive Treatment	7 Tank Phosphate Treatment & PO Red as per IS 5 (Shade 538) Not Less Than 50 Micron
14	Service Pressure	15 Kg/cm <sup>2</sup>
15	Maximum Service Pressure	18 Kg/cm <sup>2</sup>
16	Filling Tolarence	+ 5 % & - 0 %
17	Working Temperature	+05°C to 60°C
18	Extinguishing Medium	Portable Water
19	Marking	As per IS 15683 : 2018
20	Maintenance, Care & Refilling	As per IS 2190
21	Packing	Corrugated Boxes.
22	Propellant	Carbon Dioxide Gas (CO <sub>2</sub> )



## WATER CARTRIDGE TYPE

Sr. No.	Particular	06 Ltr	09 Ltr
23	Diameter (Approx.)	150 mm	175 mm
24	Model No.	HI/CART/WATER/06	HI/CART/WATER/09
25	Gas Cartridge	60 Gms	60 Gms
26	Min. Effective Discharge Time	30 Sec	50 Sec
27	Minimum Bulk Range of Discharge	2 Mtr.	2 Mtr.
28	Minimum Percentage of Discharge	95 %	95 %
29	Full Weight (Approx.)	11 Kg	15 Kg
30	Hose Length	400 mm	500 mm
31	Hydraulic Pressure	Not Less Than 35 Bar	
32	Fire Rating	3A	4A
33	Specification No.	IS 15683 : 2018	

# WATER STORED PRESSURE TYPE FIRE EXTINGUISHER

## WATER STORED PRESSURE TYPE



For Wood, Paper, Cloth Trash  
& Other Ordinary Material

IS : 15683 : 2018



CM/L - 3853775



06 Ltr

09 Ltr

### Technical Specification

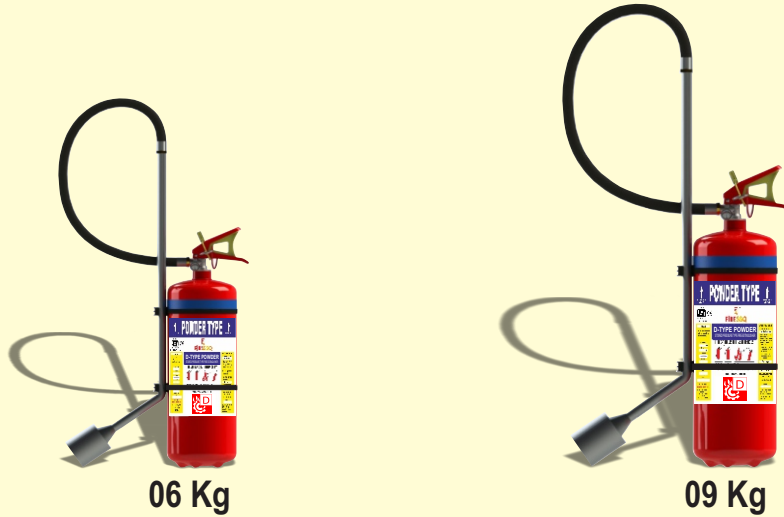
01	Trade Mark	FIRESSQ®
02	Approval	BIS Licence No:- CM/L No:- 3853775
03	Type	Portable Stored Pressure Type (Water Type)
04	Body	MS / SS / (As per IS 513 / IS 6911)
05	Neckring	MS (As per IS 1239 Part-1)
06	Valve	Brass Forged
07	Syphone Tube	ABS/Brass/Aluminium/SS
08	Hose	EPDM/PVC/Rubber
09	Wall Bracket	Wall Bracket with Duly Powder Coated/Zinc Plated with Screw
10	Test Pressure	35 Bar
11	Busting Pressure	55 Bar
12	Anti-Corrosive Treatment	7 Tank Phosphate Treatment & PO Red as per IS 5 (Shade 538) Not Less Than 50 Micron
13	Service Pressure	15 Kg/cm <sup>2</sup>
14	Maximum Service Pressure	18 Kg/cm <sup>2</sup>
15	Filling Tolerance	+ 5 % & - 0 %
16	Working Temperature	+05°C to 60°C
17	Extinguishing Medium	Portable Water
18	Marking	As per IS 15683 : 2018
19	Maintenance, Care & Refilling	As per IS 2190
20	Packing	Corrugated Boxes.
21	Propellant	Nitrogen Gas(N <sub>2</sub> )

# WATER STORED PRESSURE TYPE FIRE EXTINGUISHER

Sr. No.	Particular	06 Ltr	09 Ltr
22	Diameter (Approx.)	150 mm	175 mm
23	Model No.	HI/SP/WATER/06	HI/SP/WATER/09
24	Min. Effective Discharge Time	30 Sec	50 Sec
25	Minimum Bulk Range of Discharge	2 Mtr.	2 Mtr.
26	Minimum Percentage of Discharge	95 %	95 %
27	Full Weight (Approx.)	9.2 Kg	13.5 Kg
28	Hose Length	400 mm	500 mm
29	Hydraulic Pressure	Not Less Than 35 Bar	
30	Fire Rating	3A	4A
31	Specification No.	IS 15683 : 2018	

# PORTABLE STORED PRESSURE TYPE - POWDER D-TYPE

## PORTABLE STORED PRESSURE TYPE - POWDER D-TYPE



Technical Specification		
01	Trade Mark	FIRESSQ <sup>®</sup>
02	Type	Portable Stored Pressure Type (Powder D Type)
03	Body	MS (As per IS 513 Grade-EDD)
04	Neckring	MS (As per IS 1239 Part-1)
05	Valve	Brass Forged
06	Syphone Tube	ABS/Brass/Aluminium/SS
07	Hose	EPDM/PVC/Rubber
08	Wall Bracket	Wall Bracket with Duly Powder Coated/Zinc Plated with Screw
09	Test Pressure	35 Bar
10	Busting Pressure	55 Bar
11	Anti-Corrosive Treatment	7 Tank Phosphate Treatment & PO Red as per IS 5 (Shade 538) Not Less Than 50 Micron
12	Service Pressure	15 Kgf/cm <sup>2</sup>
13	Maximum Service Pressure	18 Kgf/cm <sup>2</sup>
14	Filling Tolerance	+ 2 % & - 2 %
15	Working Temperature	-30°C to 60°C
16	Extinguishing Medium	Mixture of Sodium, Potassium and Barium Chloride Base Powder (As per IS 4308 : 2019)
17	Marking	As per IS 15683 : 2018
18	Maintenance, Care & Refilling	As per IS 2190
19	Packing	Corrugated Boxes.
20	Propellant	Nitrogen Gas(N <sub>2</sub> )
21	Leakage Test	Inverted Glass / Soap Test

## PORTABLE STORED PRESSURE TYPE - POWDER D-TYPE

Sr. No.	Particular	06 Kg	09 Kg
22	Diameter (Approx.)	150 mm	175 mm
23	Model No.	HI/SP/D/06Kg	HI/SP/D/09Kg
24	Min. Effective Discharge Time	25 sec	36 sec
25	Minimum Bulk Rang of Discharge	2 Mtr	2 Mtr
26	Minimum Percentage of Discharge	90 %	90 %
27	Full Weight (Approx.)	10 Kg	14 Kg
28	Hose Length	500 mm	500 mm
29	Hydraulic Pressure	Not Less Than 35 Bar	
30	Specification No.	IS 15683 : 2018	

# PORTABLE STORED PRESSURE - WET CHEMICAL K-TYPE

## PORTABLE STORED PRESSURE - WET CHEMICAL K-TYPE



### Technical Specification

01	Trade Mark	FIRESSQ <sup>®</sup>
02	Type	Portable Stored Pressure Type (Wet Chemical K-Type)
03	Body	SS (As per SS304L / IS 6911)
04	Neckring	SS (As per SS 304)
05	Valve	Brass Forged
06	Syphone Tube	SS
07	Hose	EPDM/PVC/Rubber
08	Wall Bracket	Wall Bracket with Duly Powder Coated/Zinc Plated with Screw
09	Test Pressure	35 Bar
10	Busting Pressure	55 Bar
11	Anti-Corrosive Treatment	Buff / PO Red as per IS 5 (Shade 538) Not Less Than 50 Micron
12	Service Pressure	15 Kg/cm <sup>2</sup>
13	Maximum Service Pressure	18 Kg/cm <sup>2</sup>
14	Filling Tolerance	+ 2 % & - 2 %
15	Working Temperature	+5°C to +60°C
16	Extinguishing Medium	Wet Chemical
17	Marking	As per IS 15683 : 2018
18	Maintenance, Care & Refilling	As per IS 2190
19	Packing	Corrugated Boxes.
20	Propellant	Nitrogen Gas(N <sub>2</sub> )
21	Leakage Test	Inverted Glass / Soap Test

**PORTABLE STORED PRESSURE TYPE - WET CHEMICAL K-TYPE**

<b>Sr. No.</b>	<b>Particular</b>	<b>06 Ltr</b>	<b>09 Ltr</b>
22	Diameter (Approx.)	150 mm	175 mm
23	Model No.	HI/SP/K/06Kg	HI/SP/K/09Kg
24	Min. Effective Discharge Time	35 sec	55 sec
25	Minimum Bulk Rang of Discharge	3 Mtr	3 Mtr
26	Minimum Percentage of Discharge	95 %	95 %
27	Full Weight (Approx.)	9.5 Kg	14 Kg
28	Hose Length	500 mm	500 mm
29	Hydraulic Pressure	Not Less Than 35 Bar	
30	Specification No.	IS 15683 : 2018	

# ALL TYPE OF CARTRIDGES

## ALL TYPE OF CATRIDGES

IS : 4947 : 2006



CM/L - 7271773



40 Gms

60 Gms

90 Gms

120 Gms

180 Gms

200 Gms

250 Gms

300 Gms

### Technical Specification

01	Trade Mark	FIRESSQ <sup>®</sup>							
02	Approval	BIS Licence No:- CM/L No:- 7271773							
03	Body	MS Welded Tube (As per IS 1239)							
04	Nut	Brass Forged (As per IS 6912)							
05	Sealing Disc	Copper							
06	Type	Only CO <sub>2</sub> Gas							
07	Hydraulic Test Pressure	250 Kgf/cm <sup>2</sup>							
08	Filling Ratio	0.667 (Max.)							
09	Working Temperature	-30 <sup>o</sup> C to 60 <sup>o</sup> C							
10	Working Pressure	125 Kgf/cm <sup>2</sup>							
Sr. No.	Particular	40 Gms	60 Gms	90 Gms	120 Gms	180 Gms	200 Gms	250 Gms	300 Gms
11	Diameter	33 mm	33 mm	38 mm	38 mm	38 mm	38 mm	48 mm	48 mm
12	Model No.	HI/ CART/ 40 gms	HI/ CART/ 60 gms	HI/ CART/ 90 gms	HI/ CART/ 120 gms	HI/ CART/ 180 gms	HI/ CART/ 200 gms	HI/ CART/ 250 gms	HI/ CART/ 300 gms
13	Specification No.	IS 4947 : 2006							



# AQUEOUS FILM FORMING FOAM (AFFF)

Ph Value	6.5 To 8.5
Miscibility	Miscibility With Water / Seawater
Specific Gravity	1.00 To 1.15
Sludge Contents	Max 0.25%
Viscosity	20 CST
Freezing Point	0°C (Shall Flow)
Spreading Co - Efficient	Min 3
Expansion	6 To 12
Drainage Time	120 Sec



IS : 4989 - 2018



CM/L - 7563382



TYPE 'B' FOR USE  
ON PETROL, OIL, PAINTS,  
SPIRIT, CHEMICALS, ETC.

## DRY CHEMICAL POWDER ABC

Apparent Density	0.75 gm/ml to 1.10 gm/ml
Temperature Stability Range	(-) 60 °C to 55 °C
Particle Size	100% -40 mesh sieve
	85% -100 mesh sieve
	72% -200mesh sieve
	68% -325 mesh sieve
Fluidity	50gm / sec free flowing characteristics
Moisture Content	less then 0.25%
Chemical Content	more than 50 %
Other Properties Tested	Hygroscopicity, Water Repellancy, fire knock down, caking, foam compatibility



IS : 4308 : 2019



CM/L - 7559997



TYPE 'A' FOR USE  
ON PAPER, WOOD,  
GLASS, PLASTIC, ETC.



TYPE 'B' FOR USE  
ON PETROL, OIL, PAINTS,  
SPIRIT, CHEMICALS, ETC.



TYPE 'C' FOR USE  
ON COOKING & WELDING  
GAS, ELECTRIC FIRE, ETC.

## DRY CHEMICAL POWDER BC

Apparent Density	0.85 gm/ml to 1.15 gm/ml
Temperature Stability Range	(-) 60° c to 55°c
Particle Size	100 % pass through 40 mesh sieve
	98% pass through 100 mesh sieve
	90% pass through 200 mesh sieve
	65% pass through 325 mesh sieve
Fluidity	60gm / sec free flowing characteristics
Moisture Content	less then 0.25%
Non-corrosive And Non Abrasive	Non-toxic, Compatible With Protin Foam
Chemical Content	more than 90%
Other Properties Tested	Hygroscopicity, water repellancy, fire knock down, caking, foam compatibility



IS : 4308-2019



CM/L - 7559997



For gasoline Grease &  
other flammable liquid



For live electrical  
equipment

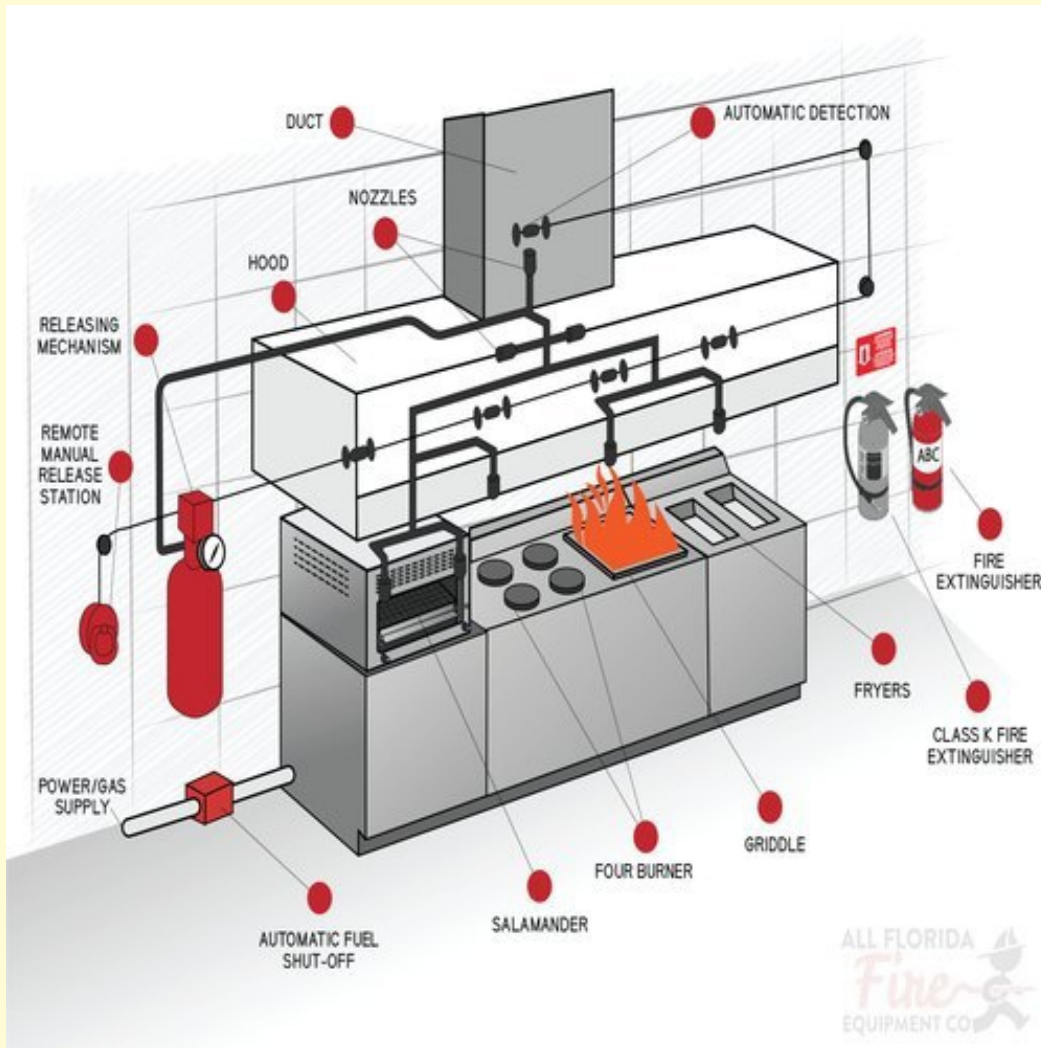
# PLC & Panel Fire Suppression System



## PLC & Panel Fire Suppression System

Technical Specification		
01	Trade Mark	FIRESSQ <sup>®</sup>
02	Type	Type - Clean Agent base Fire Extinghisher
03	DLP Valve	UL Listed Automatic Direct Low Pressure Valve
04	Straigh Connector	Brass (As per IS 319 Type-1)
05	End of Line Adaptor	Brass Body with Non Return Valve
06	Heat Detection Tube	US Listed with 80°C to 100°C Busting Temperature
07	Alarm Panel	AC Alarm Panel with Pressure Sensor
08	Fire Extinghisher	2 Kg / 4 Kg Clean Agent Base Fire Extinghisher
09	Accessories	Brass

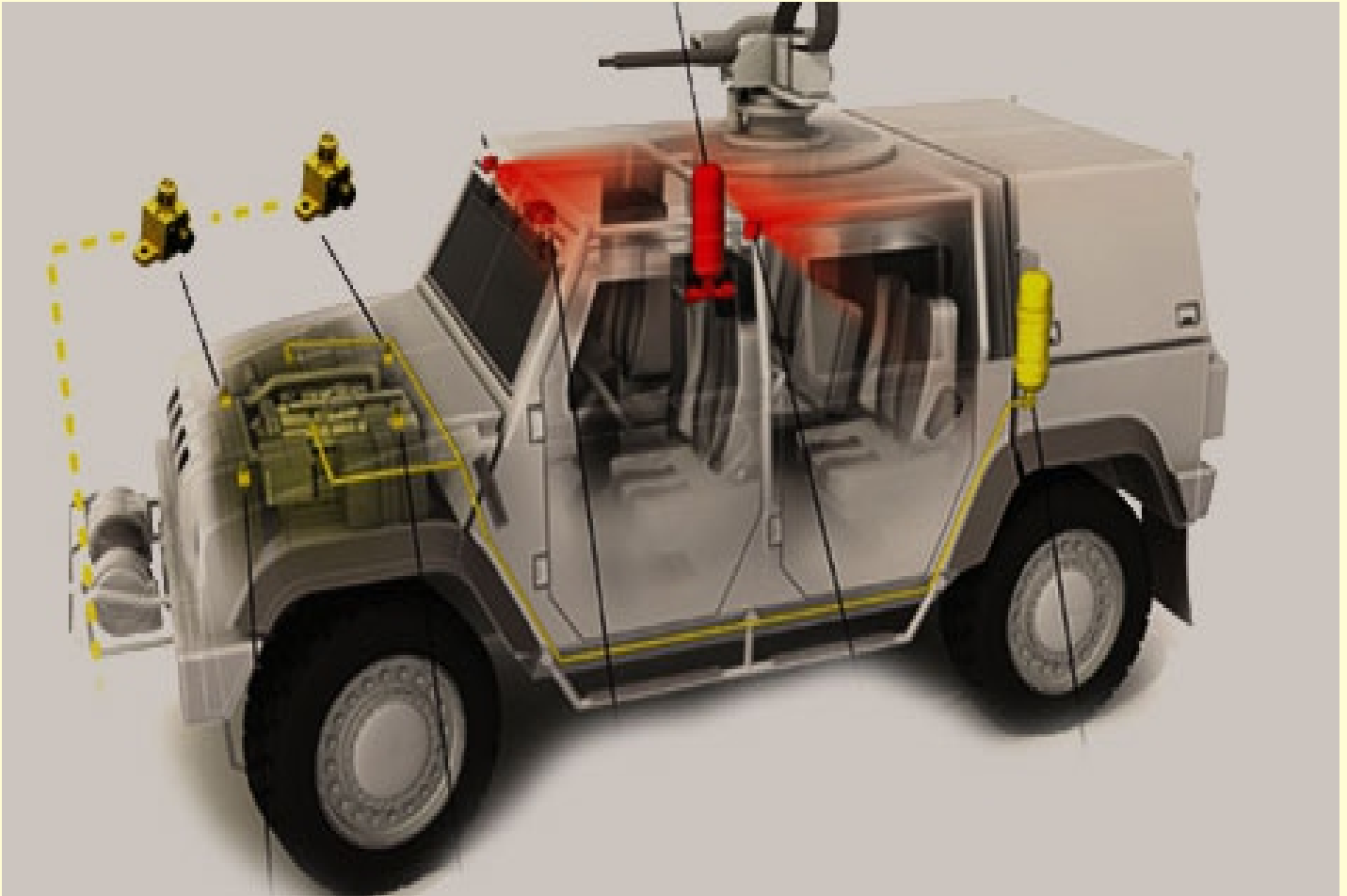
# Kitchen Fire Suppression System



**Kitchen Fire Suppression System**

Technical Specification		
01	Trade Mark	FIRESSQ®
02	Type	Type - K (Wet Chemical Base Fire Extinghisher)
03	ILP Valve	UL Listed Automatic Indirect Low Pressure Valve
04	Straigh Connector	Brass (As per IS 319 Type-1)
05	End of Line Adaptor	Brass Body with Non Return Valve and Manual Operating Switch
06	Heat Detection Tube	US Listed with 80°C to 100°C Busting Temperature
07	Alarm Panel	AC Alarm Panel with Pressure Sensor
08	Discharge Assembly	SS 304
09	Discharge Hose	Rubber (As per SAE R 100)
10	Working Pressure of Hose	Up to 120 Kgf/cm <sup>2</sup>
11	Fire Extinghisher	6 Kg / 9 Kg Type - K (Wet Chemical Base)
12	Accessories	Brass / SS

# Vehicle Fire Suppression System



**Vehicle Fire Suppression System**

<b>Technical Specification</b>		
01	Trade Mark	FIRESSQ <sup>®</sup>
02	Type	Type - Stored Pressure (ABC / BC Powder AFFF Foam Base Fire Extinghisher)
03	ILP Valve	UL Listed Automatic Indirect Low Pressure Valve
04	Straigh Connector	Brass (As per IS 319 Type-1)
05	End of Line Adaptor	Brass Body with Non Return Valve and Manual Operating Switch
06	Heat Detection Tube	US Listed with 80°C to 100°C Busting Temperature
07	Alarm Panel	DC Alarm Panel with Pressure Sensor
08	Discharge Assembly	Brass
09	Discharge Hose	Rubber (As per SAE R 100)
10	Working Pressure of Hose	Up to 120 Kgf/cm <sup>2</sup>
11	Fire Extinghisher	6 Kg / 9 Kg ABC/BC Powder / AFFF Foam Base Fire Extinghisher (As per IS 4308 / 4989)
12	Accessories	Brass

**1) Ministry of Defence -**

- a. Army
- b. Navy
- c. Air Force

**2) Indian Railways -**

- a. Western Railway, Mumbai.
- b. Central Railway, Mumbai.
- c. Northern Railway, New Delhi.
- d. Southern Railway, Chennai.
- e. Eastern Railway, Kolkata.
- f. South Eastern Railway, Kolkata.
- g. Integral Coach Factory, Chennai.
- h. Diesel Locomotive Works, Varanasi.
- i. Rail Coach Factory, Kapurthala.

- 3) Directorate General of Assam Rifles, Shillong - 793011**
- 4) Indian Oil Corporation Ltd., Bandra (East), Mumbai - 400 051.**
- 5) Central Warehousing Corporation, Kolkata.**
- 6) Maharashtra State Warehousing Corporation, Mumbai**
- 7) NTPC Limited, Korba, Chhattisgarh - 495450.**
- 8) NTPC Limited, Angul, Orissa.**
- 9) Essar Construction (India) Ltd., Hazira, Surat - 394 270.**
- 10) Essar Oil Ltd., Jamnagar.**
- 11) Kerala State Road Transport Corporation,  
Thiruvantapuram - 695023.**
- 12) Combat Vehicles Research Establishment, Avadi,  
Chennai - 600 054.**
- 13) ONGC, Mumbai.**
- 14) Airport Authority Of India, Kolkata.**
- 15) Rajasthan Rajya Vidyut Prasaran Nigam Ltd., Jaipur.**

**Our Valued Customer**





# **FIRESSQ**® **H**ITESH INDUSTRIES

**Works & Office :**  
G - 7, GIDC - Lodhika, Metoda, Dist. Rajkot - 360 021, Gujarat.  
Tel : 02827 - 287531. Tel / Fax : 02827 - 287531

**E-mail :** [hitesh@hiteshindustries.com](mailto:hitesh@hiteshindustries.com)  
**Web :** [www.hiteshindustries.com](http://www.hiteshindustries.com)

